



Quick Start Guide



Document Version: 1.1

Last Revision Date: June 6th, 2016

Prepared by: KiddBott Technologies, Inc

Table of Contents:

[Revision History](#)

[1 - Installing CoachProxy](#)

[2 - Change your CoachProxy Direct Wi-Fi settings](#)

[3 - Connect CoachProxy to Your Wi-Fi Network](#)

[4 - Setup Remote Access Service](#)

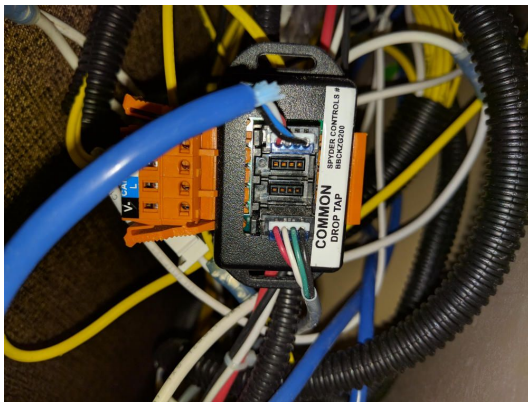
[5 - Reset CoachProxy to Factory Defaults](#)

Revision History

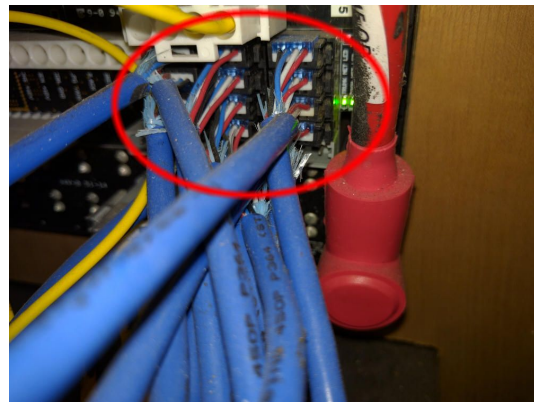
Version	Release Date	Changes
1.0	2016-06-05	Initial Release
1.1	2016-06-06	Added install location photos

1 - Installing CoachProxy

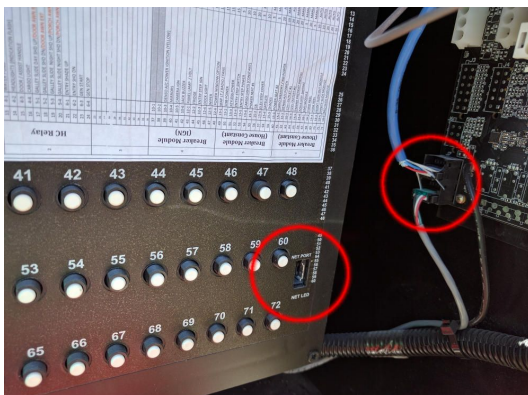
- 1) Find a place to plug in CoachProxy unit. You are plugging in a connector that can only be inserting one way. So don't worry, find an open port and just plug it in. Suggested locations in order of preference:
 - a) Inside the passenger side console (beside the passenger captain's chair)
 - b) Behind the refrigerator exterior access panel
 - c) Directly into the Spyder Controls House Panel (usually inside at the rear of the coach)
 - d) Directly into the Spyder Controls Chassis Panel (usually inside the front bay under the driver's seat)



Inside Passenger Side Console



Behind Spyder Controls House Panel



**Spyder Controls Chassis Panel and
Battery monitor Panels**



Relax. It plugs right in.

If you have issues finding a suitable installation location, please reach out via the 'Contact Us' link on <https://CoachProxy.com>.

- 2) Wait about 2 minutes for CoachProxy to fully start up.

- 3) Connect to the CoachProxy Wi-Fi network
Wi-Fi Name: CoachProxy_xxxxxx
Wi-Fi Password: coachproxy01
- 4) Open your web browser and type in **192.168.41.1** and press enter or go.
- 5) CoachProxy should load right up and you can control your coach!

2 - Change your CoachProxy Direct Wi-Fi settings

This is an important step as it will prevent others from connecting to and controlling your coach.

- 1) After installation, Connect to CoachProxy and Touch / Click on the top left Menu (three horizontal bars), go to the **System** panel and look for '*CoachProxy Direct Wi-Fi*' section. (Not to be confused with '*Join Your Wi-Fi*')
2) Update the Wi-Fi name and Password areas to suit your desired values
3) Touch / Click on the Checkmark at the bottom of the section.

NOTE: You will be disconnected from CoachProxy and need to re-connect using the new Wi-Fi name and password you've just set. If you forget what this is, you can always Reset your CoachProxy to defaults with the procedure at the bottom of this guide.

3 - Connect CoachProxy to Your Wi-Fi Network

Note: This section is for joining your CoachProxy to your existing Wi-Fi network.

- 1) After installation, connect to CoachProxy and Touch / Click on the top left Menu (three horizontal bars), go to the **System** panel and look for '*Join Your Wi-Fi*' section. (Not to be confused with '*CoachProxy Direct Wi-Fi*')
2) Enter in your existing Wi-Fi network's Name and Password.
(These settings are case sensitive!)
3) Touch / Click on on the Check mark at the bottom of the section.
4) Watch the screen for status messages as CoachProxy attempts to connect for any issues.
5) Once connected, CoachProxy will provide the IP address your network gave CoachProxy.
6) Connect your Phone, Tablet or Computer back to your existing Wi-Fi network (not the CoachProxy Direct Wi-Fi network).
7) Type in the IP address that was provided by CoachProxy into the web browser.
8) After a few seconds, CoachProxy should be displayed.
9) If you will not be using CoachProxy over a remote connection, please now save a link to this page on your desktop / device home page for easy access.

NOTE: It is NOT recommended to use the CoachProxy Direct Wi-Fi connection if you have CoachProxy connected to your network.

4 - Setup Remote Access Service

- 1) Be sure your CoachProxy device is connected to a network that has Internet access.
- 2) Connect to CoachProxy and Touch / Click on the top left Menu (three horizontal bars), go to the **System** panel.
- 3) Under the '*Network Information*' section, look for 'Remote Access Capable'.
 - a) If 'Remote Access Capable' is 'No', please check your settings and try again.
- 4) If 'Remote Access Capable' is 'Yes', go to <https://store.CoachProxy.com>, purchase the 'Remote Access Service'
- 5) During the purchase process, you will need to input the Serial Number of your CoachProxy device. This is located on the **System** panel of your CoachProxy device directly above the 'Reboot' button.
- 6) After you've completed the Checkout process, please go to your 'My Account' page at <https://store.CoachProxy.com/my-account/>
- 7) Click on the 'Update CoachProxy Link' button
- 8) Confirm your CoachProxy Serial Number is correct, and provide the MyURL Path and Authentication Code you'd like to use.
- 9) Click 'Update'
- 10) Your new MyPath URL will be active within 60 seconds. A link to the active path is provided both on the 'My Account' page, as well as the 'Link your CoachProxy' section.
- 11) Please test your new link after a minute by entering in the URL you just created.
- 12) After authenticating, your CoachProxy interface should be visible!
- 13) Please save a link to this page as your new desktop link for easy access.
Details on how to do this can be found by doing a Google search on 'How to create a website link on my desktop'

Suggestion: In order to conserve data on your internet plan, you may wish to create two links on your desktop. One for when you're at home, and can use the local network address. The other for when you're away from home and can utilize the 'Remote Access' service.

5 - Reset CoachProxy to Factory Defaults

- 1) Go to a Spyder control panel that has a '*Panel Lights*' button on it.
- 2) Starting with the Panel Lights **ON**, press the Panel Lights button 5 times in a row within 3 seconds. (Off, On, Off, On, Off)
- 3) The panel light will blink once to confirm the command was received, then twice more immediately before the CoachProxy reboots with Factory default values.

Please wait at least two minutes and then connect to CoachProxy directly to reconfigure.



Great Job! Now you have taken control.



A KiddBott Technologies, LLC Product